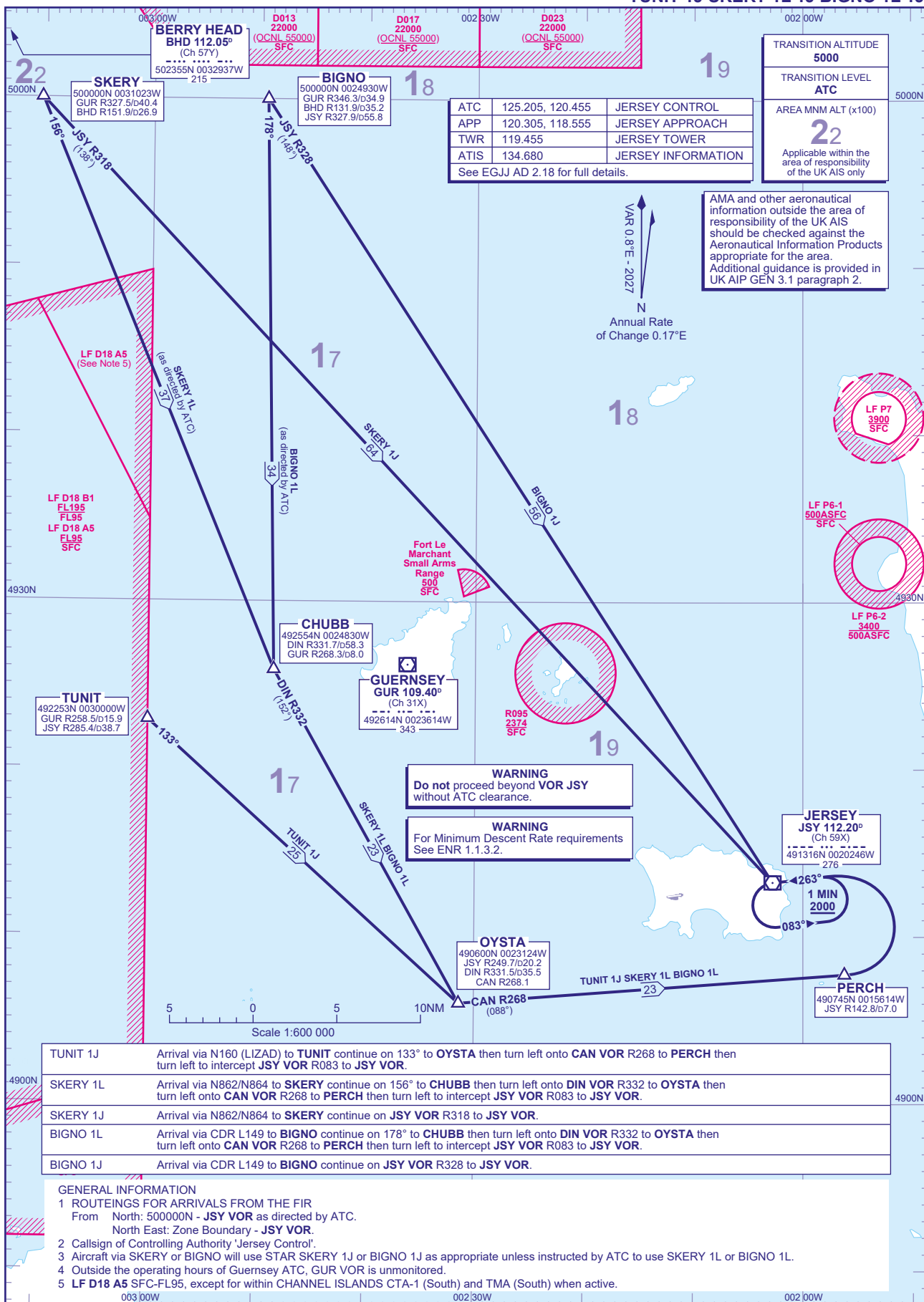


STANDARD ARRIVAL CHART - ICAO

DISTANCES IN NAUTICAL MILES
BEARINGS, TRACKS AND RADIALS ARE MAGNETIC
ALTITUDES AND ELEVATIONS ARE IN FEETJERSEY
RWY 26
TUNIT 1J SKERY 1L 1J BIGNO 1L 1J

TUNIT 1J	Arrival via N160 (LIZAD) to TUNIT continue on 133° to OYSTA then turn left onto CAN VOR R268 to PERCH then turn left to intercept JSY VOR R083 to JSY VOR.
SKERY 1L	Arrival via N862/N864 to SKERY continue on 156° to CHUBB then turn left onto DIN VOR R332 to OYSTA then turn left onto CAN VOR R268 to PERCH then turn left to intercept JSY VOR R083 to JSY VOR.
SKERY 1J	Arrival via N862/N864 to SKERY continue on JSY VOR R318 to JSY VOR.
BIGNO 1L	Arrival via CDR L149 to BIGNO continue on 178° to CHUBB then turn left onto DIN VOR R332 to OYSTA then turn left onto CAN VOR R268 to PERCH then turn left to intercept JSY VOR R083 to JSY VOR.
BIGNO 1J	Arrival via CDR L149 to BIGNO continue on JSY VOR R328 to JSY VOR.

GENERAL INFORMATION

1 ROUTEINGS FOR ARRIVALS FROM THE FIR

From North: 500000N - JSY VOR as directed by ATC.

North East: Zone Boundary - JSY VOR.

2 Callsign of Controlling Authority 'Jersey Control'.

3 Aircraft via SKERY or BIGNO will use STAR SKERY 1J or BIGNO 1J as appropriate unless instructed by ATC to use SKERY 1L or BIGNO 1L.

4 Outside the operating hours of Guernsey ATC, GUR VOR is unmonitored.

5 LF D18 A5 SFC-FL95, except for within CHANNEL ISLANDS CTA-1 (South) and TMA (South) when active.

CHANGE (4/26): AMA UPDATED.

AERO INFO DATE 22 JAN 26

AD 2-EGJJ-7-4